

Secret of Pleasure

ZEL·EX

User Guide

www.zelexdoll.com

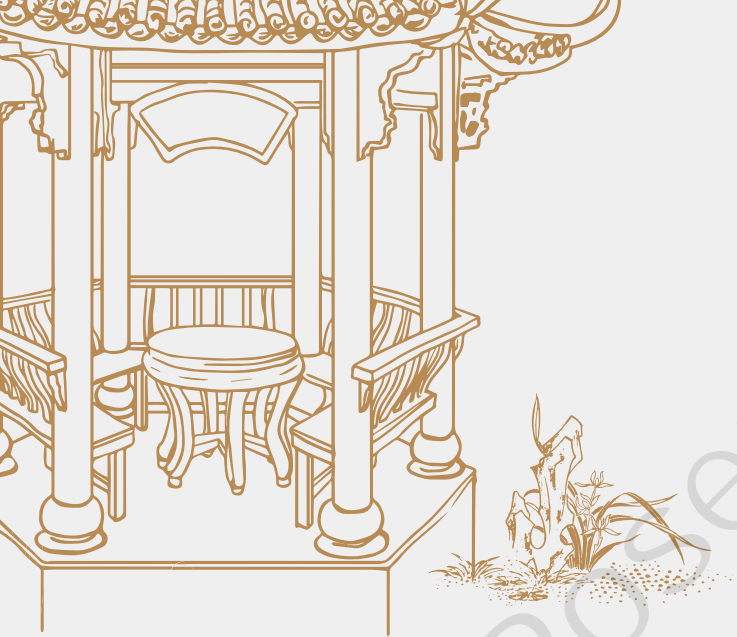


ZELEX

At the very beginning, we would like to thank you for believing and purchasing ZELEX. We promise you won't regret for your purchase. Wish you have fun exploring the secret of your ideal lady.

Thank you again for choosing ZELEX!

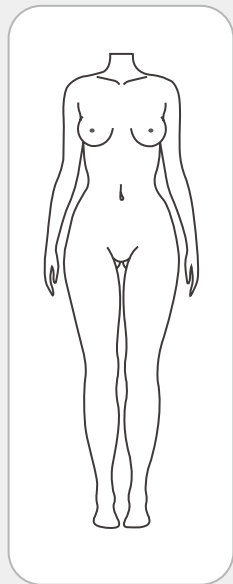




Catalogue

Packing List	5
How to Take the Doll out from Package	7
Head Installation Method	9
How to Install Removable Labia Insert	10
Installation Guide for the Clamp and Suction Module	11
Range of Skeleton Movement	13
Cleaning Tutorial	17
Storage Guide	18
Cautions	19
Special Note	21

Packaging List



Body



Head



Wig



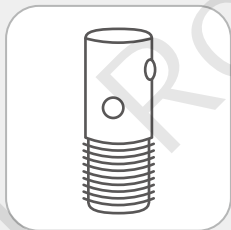
Common sized underwear



Comb



Cleaning tool



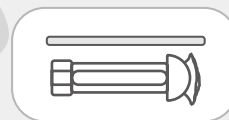
M16 push-fit adaptor



Glove



Heating stick



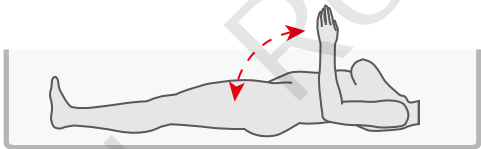
Note:removable vagina comes with one insert and stick as standard



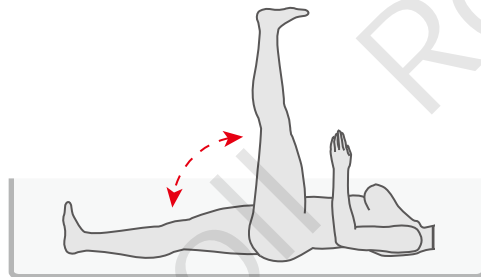
How to Take the Doll out from Package



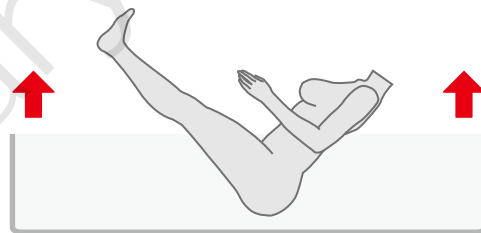
Take out the styrofoam, heads and other accessories from the box. Make sure only the body is left in the box.



Bend the doll's elbow to about 90 degrees.

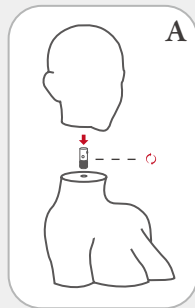


Lift the doll's legs up to about 90 degrees.



Find a suitable position to move the doll out of the box.

Head Installation Method

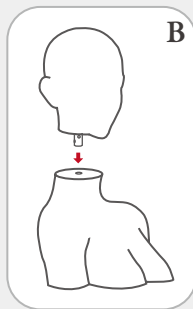


For A series head: You can just simply screw the threaded portion inside the socket section on neck bolt (the hole on neck). Then just put the push-fit section into the head.

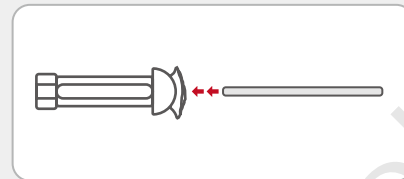
Make sure not to screw it in super tightly, leaving some of those threads visible.

For B series head: Just simply place the head inside the socket section of body.

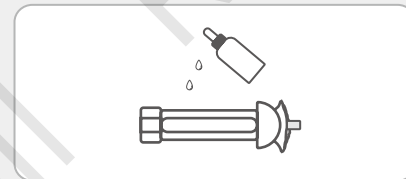
Make sure the head inserts completely, otherwises the head might damaged.



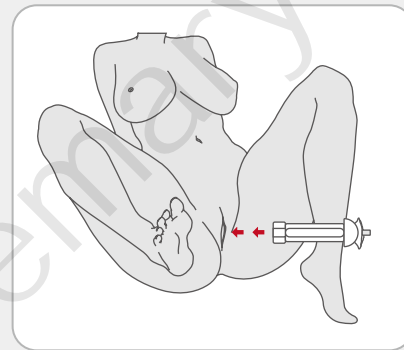
How to Install Removable Labia Insert



Put the stick inside the Removable labial insert.



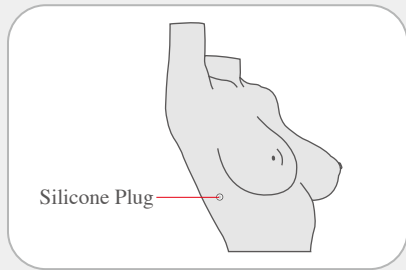
Apply lubricant all over the insert to ensure that the insert is sufficiently lubricated.



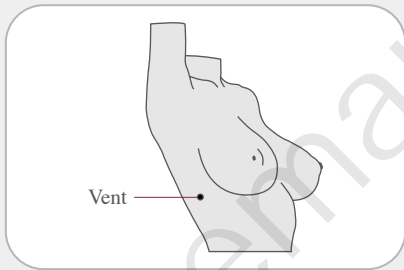
Place the insert into the vagina tunnel.

Remove the stick and it is ready to use.

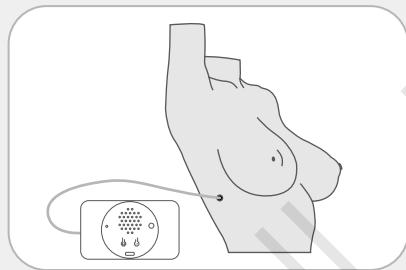
Installation Guide for the Clamp and Suction Module



1. Remove the silicone plug.

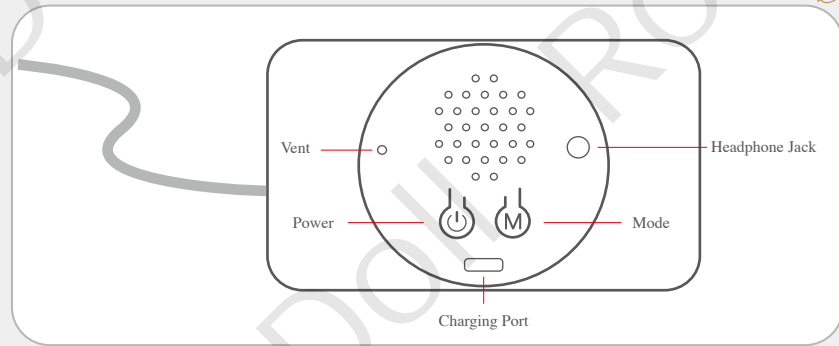


2. Check the vent for foreign objects.



3. Connect hose and vent.

Tips:
please insert the silicone plug
when cleaning the body to avoid
water from entering.



1. Power Key:

Long press 1.5 seconds to power on, the LED will be steady on, and the voice calling mode will be automatically turned on. Click the power key to switch the voice of 4 languages. Double-click to turn off the voice mode and double-click again to restart the voice mode.

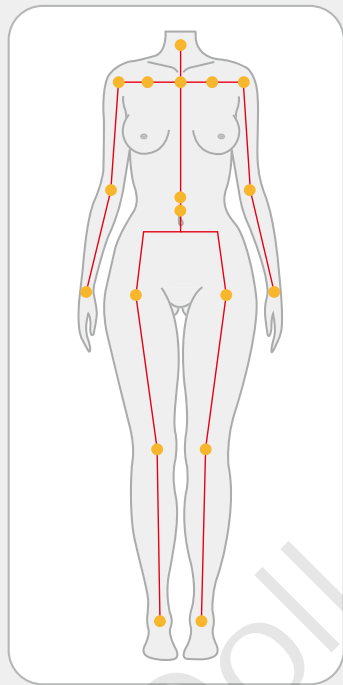
2. Mode key:

Click the mode key to select three frequency clamping modes.

3. Charging:

Stop working when charging, all LED flash when charged, fully charged LED long bright.

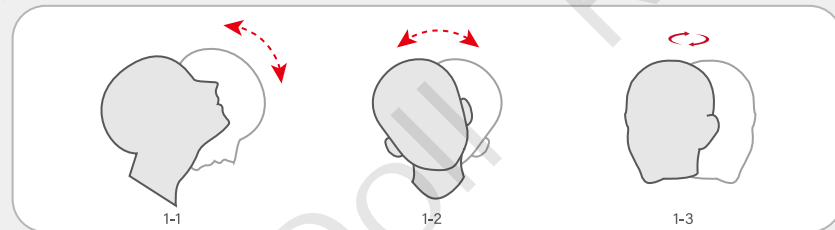
Range of Skeleton Movement



The rotation or stretching range of the movable joints are different in terms of different body parts.

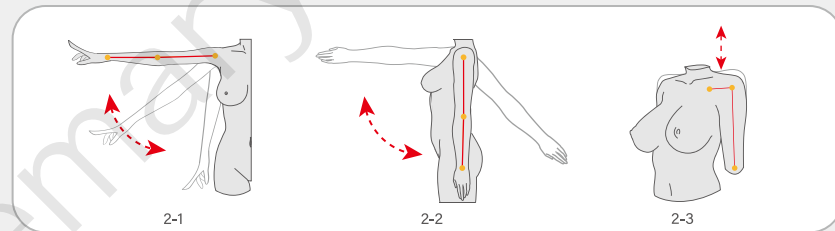
Do not rotate or stretch excessively. When swinging the joints, please do it with both hands. One hand presses/supports the joint position, and the other hand performs the posture operation.

Overall direction for each parts of body:



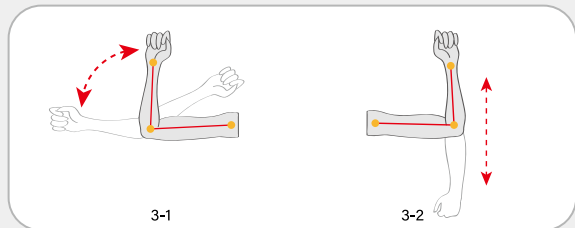
1. Head

Forward and backward directions (1-1); Left and right directions (1-2); Rotation directions (1-3).



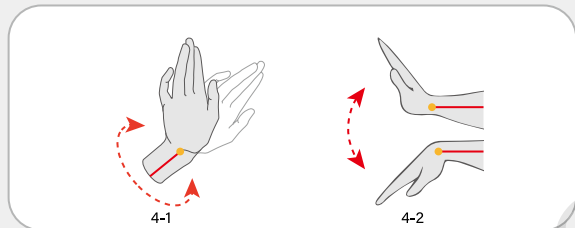
2. Shoulder

Left and right directions(2-1); Forward and backward directions(2-2); Up and down(2-3).



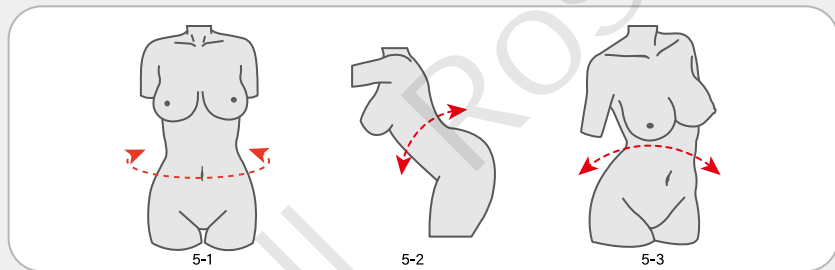
3. Elbow

Left and right directions (3-1);
Forward and backward directions(3-2).



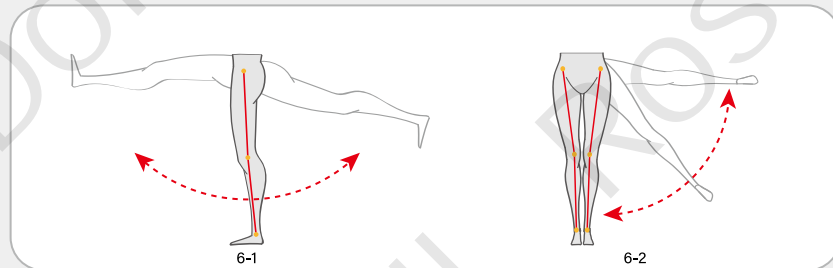
4. Wrist

Rotation directions (4-1);
Up and down(4-2).



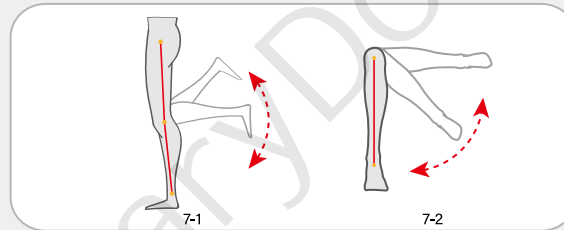
5. Waist

Rotation directions(5-1); Forward and backward directions(5-2); Left and right directions(5-3).



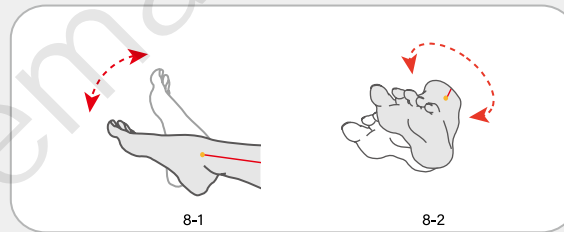
6. Crotch

Forward and backward directions(6-1); Left and right directions(6-2).



7. Knee

Forward and backward directions(7-1);
Rotation directions(7-2).



8. Foot

Up and down(8-1);
Rotation directions(8-2).

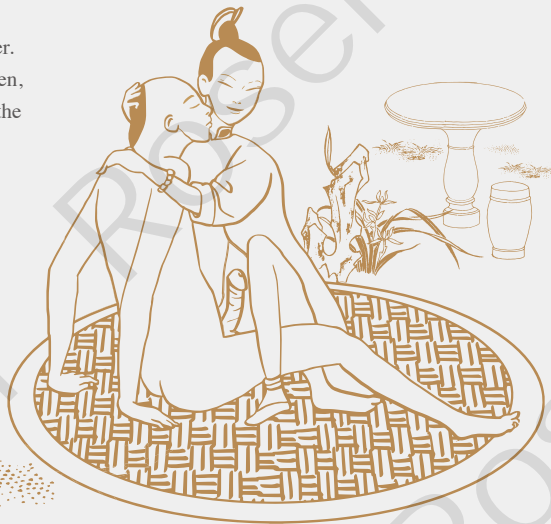
Cleaning Tutorial

Washing the doll with water and shower gel in neutral PH value is recommended. No highly alkaline, highly acidic or corrosive cleaning products for cleaning.

To clean any of the tunnels, we recommend using a water irrigator to spray into the tunnels, allowing the water to run out of the tunnel.

Powdering is necessary after cleaning the doll.

Make sure to clean it after you 'used' her.
Please leave your doll's legs slightly open, so that the vagina and anus are open to the air, and can dry naturally.



Storage Guide

The best way to store doll must be hanging it up. If you don't have space for hanging the doll, you can place it back to the box.

Do not leave your doll stand up without any support.

Store it in room temperature.

Please do not rub or press at the surface of the doll.

Do not place this product near stoves, open flames or other strong heat sources.



Cautions

Please clean the product in regular basis if you consider this product as a sex toy.

Fingers and finger joints are very delicate, be careful while posing them.

For dolls with standing feet option, please make sure that the soles must be fully on the ground and keep the feet balanced. A soft thin pad under the feet and pillow behind doll's back are good materials for protecting your dolls while in standing position.

Proper posture is an important point while moving your doll ('Bearhug' posture recommended). Also, make sure you have fully understand the measurement of your product - especially the weight of your doll.

Do not pinch or press the product with nails or sharp, hard objects.

Avoid storing the doll in direct sunlight, this can cause damage and discolouration.

Colored and dark clothes are easy to fade and stain the surface of product. Make sure you wash all non-white clothing and accessories before dressing up.

Do not attempt to disassemble the product yourself.

The doll won't fade easily by normal cleaning and disinfection. But rubbing against rough objects, such as floors or rough cloth, there is still a possibility of fading.



Special Note

So it is possible that there are slight differences in terms of promotional photos and real products.

*If you have any questions, please do not hesitate to contact us.
We will do our best to answer any of your questions.*

